



Size:

newborn (baby, toddler, child, teen, adult)

Finished sizes in inches (numbers have been rounded): 12

(14, 16, 18, 20, 21) inches

Yarn:

Spud & Chloë Sweater (55% superwash wool, 45% organic cotton; 100 grams/160 yards), 1 skein each in Toast #7506 (MC), Moonlight #7507 (A), Ice Cream #7500 (B), Grass #7502 (C), Firecracker #7509 (D)

Needles:

US size 8 sixteen inch circular and a set of 4 double pointed needles or the size to obtain gauge.

***note:** For the newborn size you may have to use a 12 inch circular or use doublepointed needles for the entire hat. I can fit the 56 stitches on 16 inch needles but it is very tight for the first inch or so and then eases up.

Gauge:

4 ½ stitches per inch in stockinette stitch

Materials:

Yarn needle

Scissors

Stitch marker

Ruler or tape measure

Hat:

With MC and circular needles cast on 56 (64, 72, 80, 88, 96) stitches. Join to work in the round being careful not to twist the stitches. Place a stitch marker on the first stitch.

Rnds 1-4: (k2, p2) repeat to the end of the round

Newborn size only:

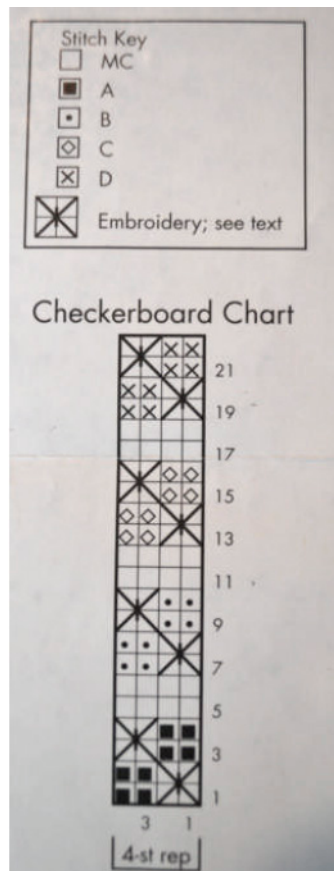
Rnds 5 and 6: knit

For the rest of the sizes:

Rnds 5-8: knit

All sizes:

Begin the checkerboard chart for the fair isle section of the hat.
(This chart is taken from the original Camp Hoodie pattern.)



Embroidery:

Embroider crosses on the checkerboard section after the hat is complete as follows (see photo for color guide as well): Following placement on chart, use D for Rows 1 -4, C for Rows 7 10, B for Rows 13 16, and A for Rows 19 22. Work 2 diagonal straight sts between the corners of the 4 st square, then work vertical st at center of square to hold diagonal sts in place. Weave in ends to the inside of the hat.

Instructional note: I have made two instructional videos for the fair isle and embroidery rounds of this hat. Here are the links or you can go to <http://spudandchloe.com/blog> and they are on the sidebar under tutorials: <http://www.spudandchloe.com/blog/2011/01/fair-isle-tutorial-for-the-camphoodie/> <http://www.spudandchloe.com/blog/2011/01/embroidery-tutorial-for-the-camphoodie/>

After completing the chart:

For sizes newborn and baby go straight to the Decrease Rounds.

For the rest of the sizes:

Continue to knit every round in the main color until the hat measures from the cast on edge:

Toddler: 4 ½ inches

Child: 5 inches

Teen: 5 ½ inches

Adult: 6 inches

Decrease rounds:

Continue working in MC only. Switch to double pointed needles when necessary.

Rnd 1: (k6, k2tog) repeat to the end of the round

Rnd 2: (k5, k2tog) repeat to the end of the round

Rnds 3 and 4: knit

Rnd 5: (k4, k2tog) repeat to the end of the round

Rnd 6: (k3, k2tog) repeat to the end of the round

Rnd 7: knit

Rnd 8: (k2, k2tog) repeat to the end of the round

Rnd 9: (k1, k2tog) repeat to the end of the round

Rnd 10: (k2tog) repeat to the end of the round

Cut the yarn. Place the end on a yarn needle. Pull through the remaining stitches and pull up tight to close the hole. Pull the end to the inside. Weave in all of the ends to the inside of the hat and trim.

Pompom:

Make a 2 inch pom pom and holding 4 strands (I used Firecracker, Ice Cream, Moonlight and Grass) together wrap 20 times. With your yarn needle and the ends of the center tie securely attach the pom to the top of the hat.