



### Skill Level:

Intermediate

### Materials:

- Spud and Chloe Outer (100g/60yds): 2 hanks
- Size 6 (4 mm) 16" straight needles
- Size 8 (5.5 mm) 16" straight needles
- Size 10 (6.5 mm) 16" straight needles
- Size K (6.5 mm) crochet hook
- Stitch markers (optional)
- Smooth waste yarn
- Tapestry needle

**Photo Shown:** Bouy #7219

### Sizes:

One Size

### Finished Measurements:

Depth: 8"

Width: 9 1/2"

### Gauge:

In Half-Fisherman's Rib on medium sized needles, 12.5 sts and 20 rows = 4"

(Row gauge changes to 17 rows = 4" for body of hat)

### Abbreviations

**CO:** Cast on

**K:** Knit

**K2tog:** knit two stitches together

**K1-b:** knit into front of stitch one row below

**Inc to 3:** P1, yo, P1 into one stitch

**Inc to 5:** P1, yo, P1, yo, P1 into one stitch

**Inc to 7:** P1, yo, P1, yo, P1, yo, P1 into one stitch

**Ndl(s):** Needle(s)

**P:** Purl

**P2tog:** purl two stitches together

**SSP:** purl two stitches together through the back loops by slipping two stitches individually, knit-wise, and purling these two stitches together through the back loop(s).

**Rep:** Repeat

**RS:** Right side

**Sl:** Slip

**SSK:** Slip, Slip, Knit

**S2KP2:** Centered Double Decrease (see description below)

**St(s):** Stitch(es)

**WS:** Wrong side

### HALF-FISHERMAN'S RIB PATTERN

Set up Row(s): \*K1, P1. Rep from \* .

Row 1 (RS): \*K1-b, P1. Rep from \* .

Row 2 (WS): \*K1, P1. Rep from \* .

### INCREASE 3 (5, 7) STITCHES IN ONE

\*Purl into stitch, drawing new loop out onto right needle, leaving original stitch on left needle; yarn over. Rep from \* 0 (1, 2) times more. Purl into the original stitch again. Three (Five, Seven) loops from one. Two (Four, Six) stitches increased.

### CENTERED DOUBLE DECREASE

On RS: Slip 2 stitches together knitwise from left needle to right needle; knit the next stitch, and pass both slipped stitches, together, over the newly knitted stitch. Two stitches decreased.  
On WS: Purl one stitch; slip the next two stitches together knitwise from the left needle to the right needle. Transfer these twisted stitches back to the left needle, with no further twisting; pass the first stitch purled back to the left needle in the same manner; pass the two slipped stitches over the purled stitch. Slip stitch to right hand needle. Two stitches decreased.

### Kitchener Rib Cast-On using Crochet Chain

Using a crochet hook and a smooth waste yarn approximately the same gauge as the main yarn, crochet a loose chain of at least 29 sts.

#### Set-up Row:

Using the largest needle, pick up stitches by knitting into the back ridge of crochet stitches as follows: K2, \*yo, K1. Repeat from \* until a total of 58 stitches are on the needle, ending on a K1. Switch to the smallest needle, and begin working chart at Row 1 (RS).

Waste yarn can be removed after Rows 1-6 have been worked.

**Note:** Hat is worked flat, with one knit selvage stitch at each end, and is seamed. Of special importance: shaping is worked on both RS rows and WS rows!

### Hat

CO 58 sts using the Kitchener Rib cast-on outlined above. Proceed with the chart, beginning on RS Row 1, and finishing with Row 43.

Needle size reminder:

Work set-up row with largest size needle.

Work Rows 1-6 with the smallest size needle.

Work Rows 7- 15 with the medium size needle.

Work Rows 16 – 43 with the largest size needle.

### Finishing

After completing Row 43, thread a tapestry needle with a piece of waste yarn approximately 20" long through the final 9 sts. Do not pull the stitches tight. Tie the ends of the waste yarn together, to secure the stitches, so they can remain open and flat for blocking. Cut the working yarn, leaving an extra-long tail of about 30".

Block the hat to the following dimensions:

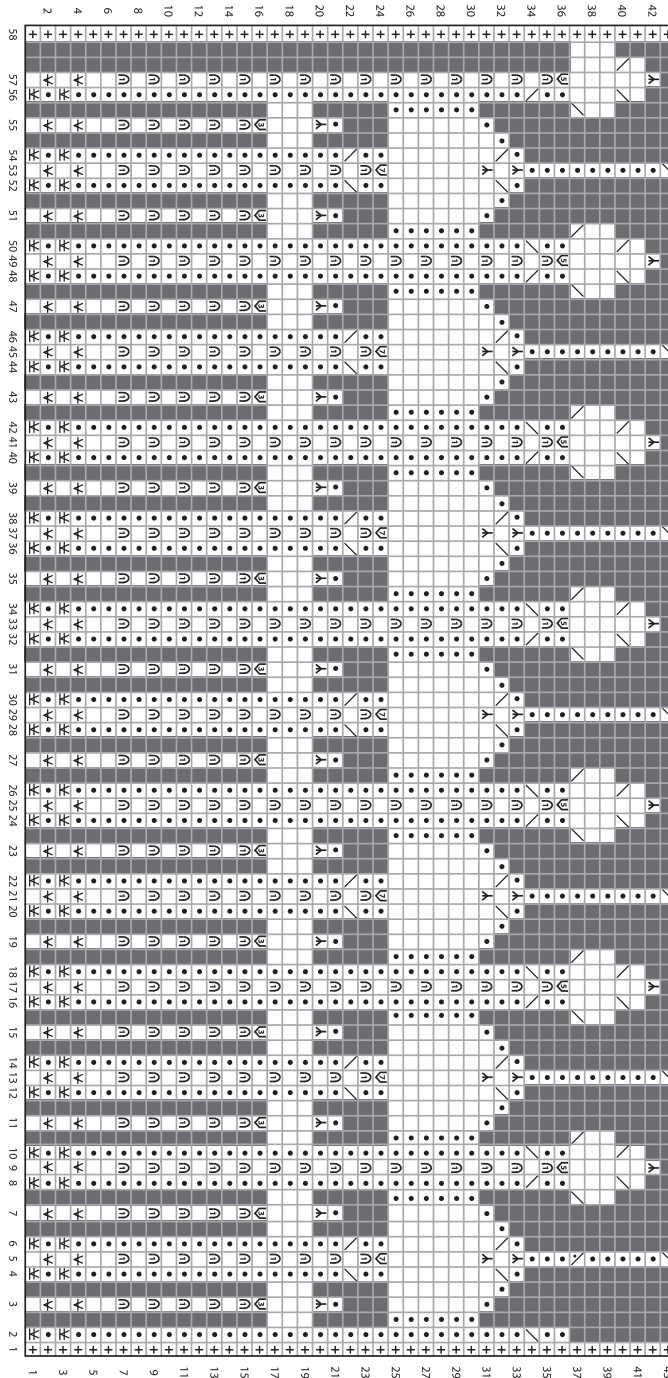
9" across the top, 18" across the bottom, and 8" from top to bottom. Allow the hat to follow the bottom curve while blocking to avoid stretching out the pattern in odd places.

Prepare to seam the hat. Replace the waste yarn running through the live stitches with the tail of working yarn. Draw the top of the hat closed. Continue seaming the hat from the RS using mattress stitch. Remember to treat the K1-b stitches along the seam edge as two individual stitches for seaming purposes! Secure and weave in all loose ends.



Spud & Chloë™  
sweet yarns for real life™

Chinese Lantern Hat  
a free design by Elizabeth Mautz-Redmann  
spudandchloe.com



STITCH KEY:	
<input type="checkbox"/> K on RS, P on WS	<input type="checkbox"/> K2tog on RS, P2tog on WS
<input type="checkbox"/> P on RS, K on WS	<input type="checkbox"/> SSK on RS, SSP on WS
<input type="checkbox"/> (RS) S1 1purlwise, holding yarn in front	<input type="checkbox"/> SSP on RS
<input type="checkbox"/> (WS) S1 1purlwise, holding yarn in front	<input type="checkbox"/> CDD
<input type="checkbox"/> K1-b	<input type="checkbox"/> Sage stitch (K1)
<input type="checkbox"/> Inc to 3	<input type="checkbox"/> No stitch
<input type="checkbox"/> Inc to 5	
<input type="checkbox"/> Inc to 7	